

ЭТА НОЧЬ СРЕДИ ДРУГИХ СОБЫТИЙ

Балалайка прима

Галина Александровна Везикова

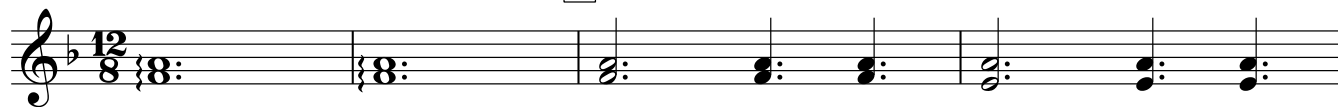
Инструментовка Д. Шевернёва

Arranžeerija Ernest Elnathan

Am/C

Dm
Andante ♩ = 75

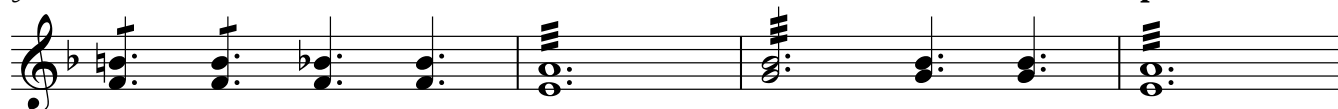
1



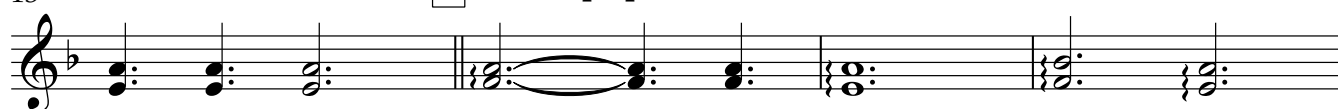
Bb Bb/F F#dim Gm Gm7 C#dim Dm Dm7/C



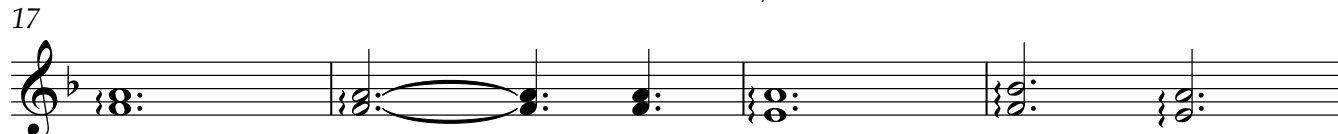
Bm7b5 Bbmaj A7 Gm/Bb A7 **poco rall.**



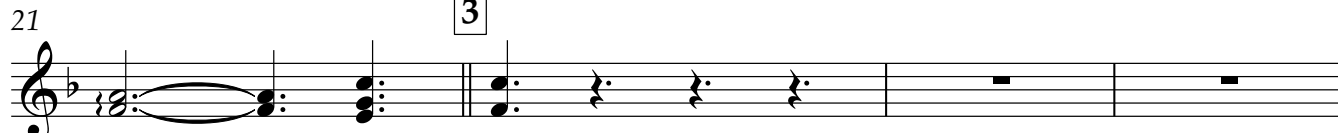
A7 Dm **2** Tempo primo A7/C# Bb6 A7



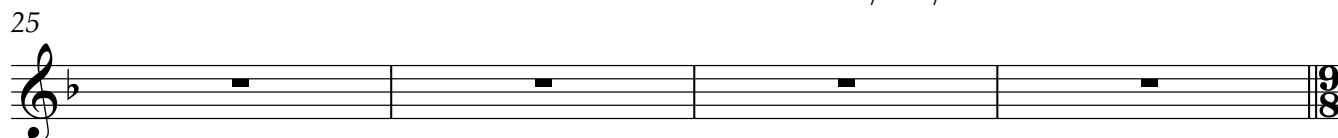
Dm Dm A/C# Bb6 A7



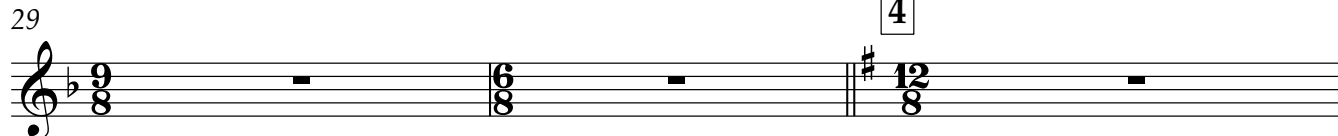
Dm C **3** F Gm A7



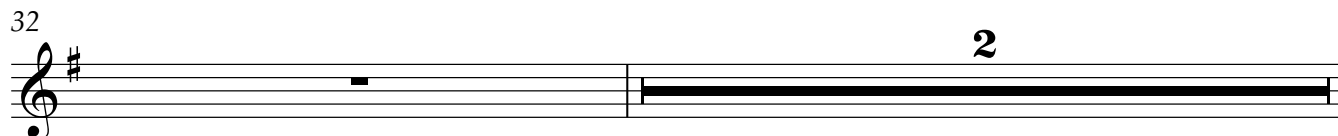
Dm Bm7 Bb Em7b5 Gm13/Cm/Bb A7



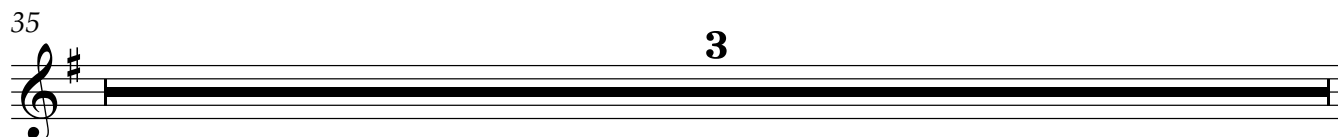
Dm Bb7 Ebm B7 **4** Em



B7 Am7 B7



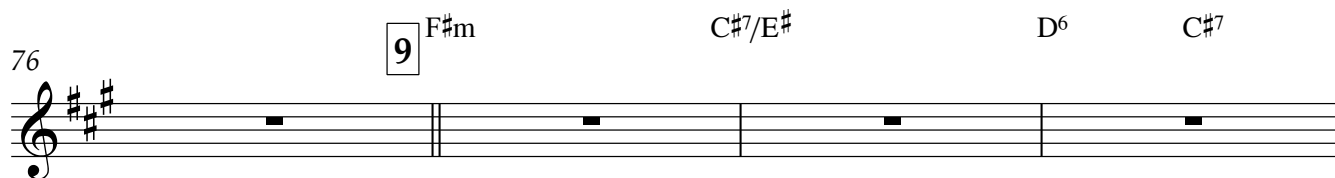
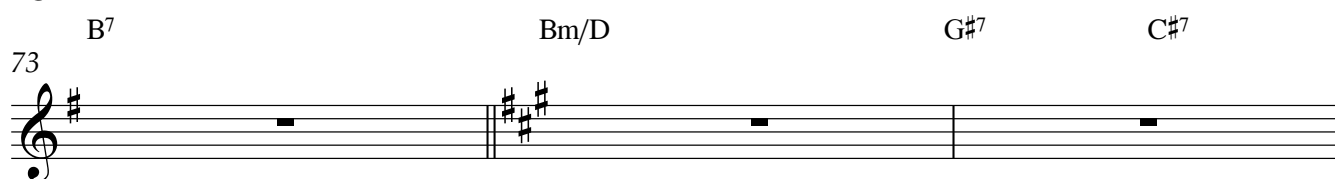
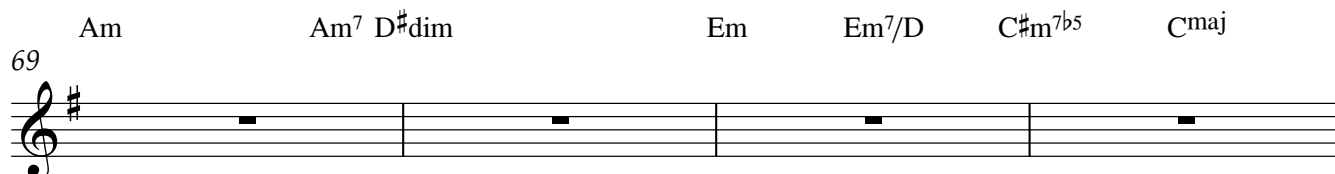
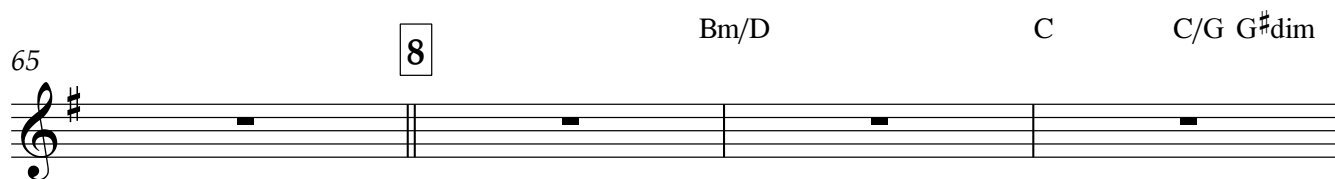
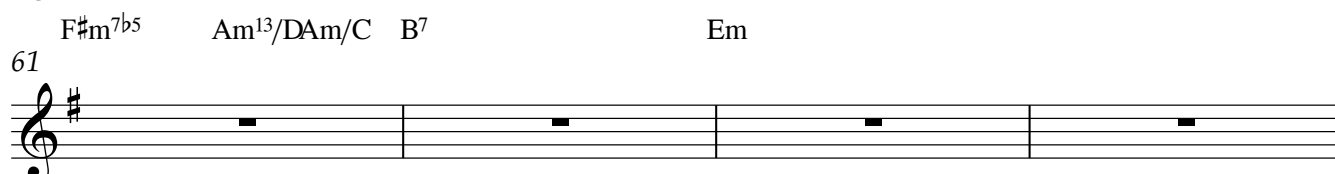
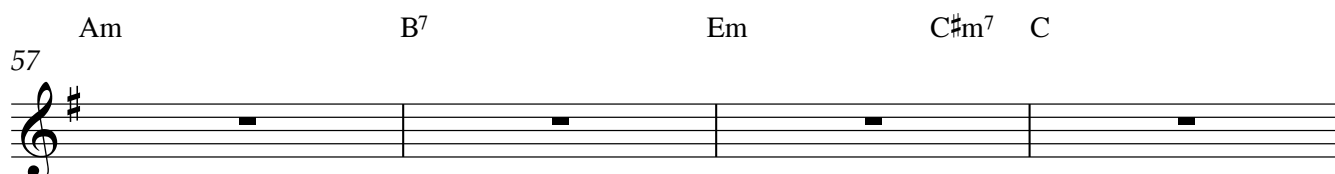
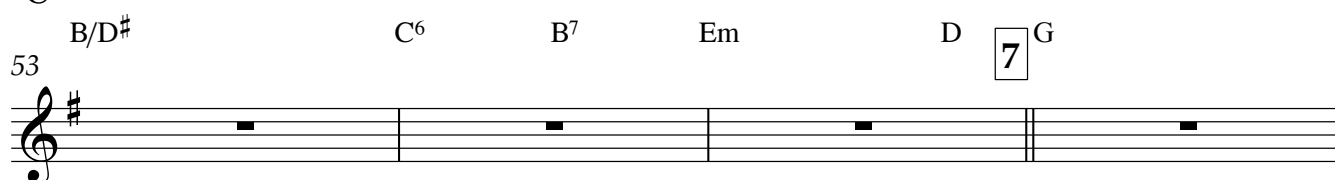
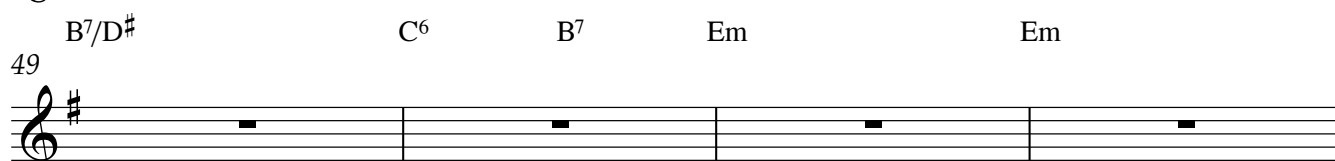
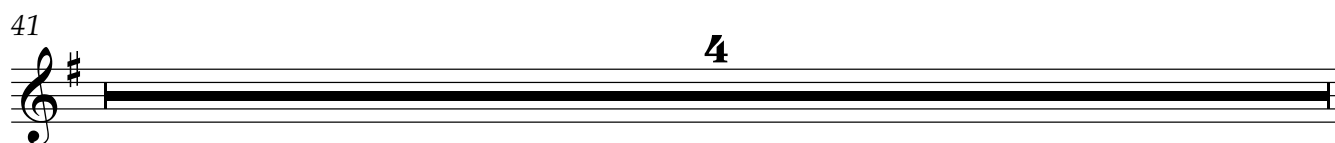
Em



3

2

Балалайка прима



80 F#m F#m Балалайка F#m D⁶ C#7 3

84 F#m E 10 A Bm

87 C#7 F#m D#m7 D G#m7b5 Bm13/EBm/D

91 C#7 11 F#m C#m7/E

94 Bm7 F#m rall. 2 2

Detailed description: The image shows a musical score for guitar in E major (three sharps). The score is divided into five systems, each with a measure number on the left. The first system (measures 80-83) has chords F#m, F#m, F#m, and C#7. The second system (measures 84-86) has chords F#m, E, A, and Bm. The third system (measures 87-90) has chords C#7, F#m, D#m7, D, G#m7b5, and Bm13/EBm/D. The fourth system (measures 91-93) has chords C#7, F#m, and C#m7/E. The fifth system (measures 94) has chords Bm7 and F#m, followed by a double bar line, a 'rall.' marking, and two measures of a double bar line.